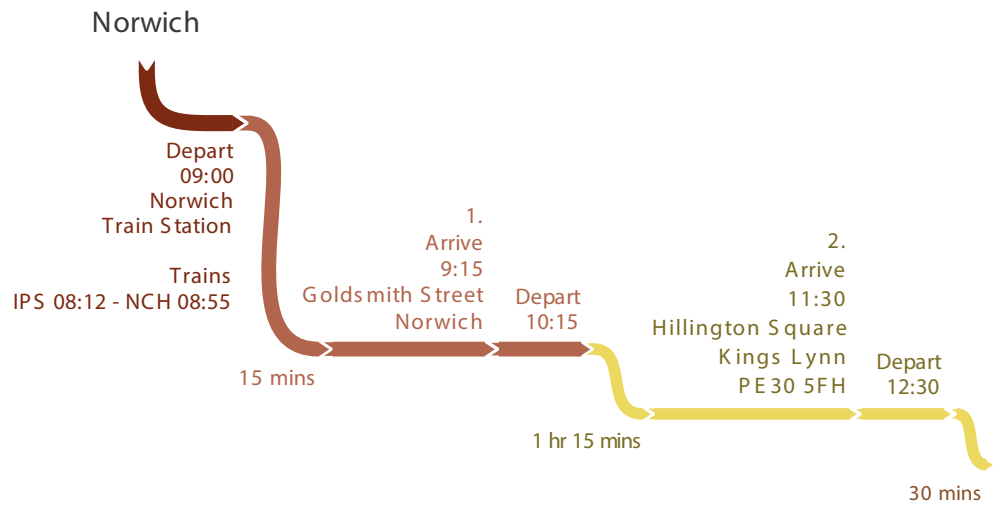




Suffolk Design

Norwich study tour

20th February 2019



Itinerary

This tour will be lead by;

Anthony Hudson, Hudson Architects

The tour will visit developments that are diverse in scale, but which all find focus in providing high-quality, sustainable, affordable, environmentally conscious buildings that respond sensitively to the context.

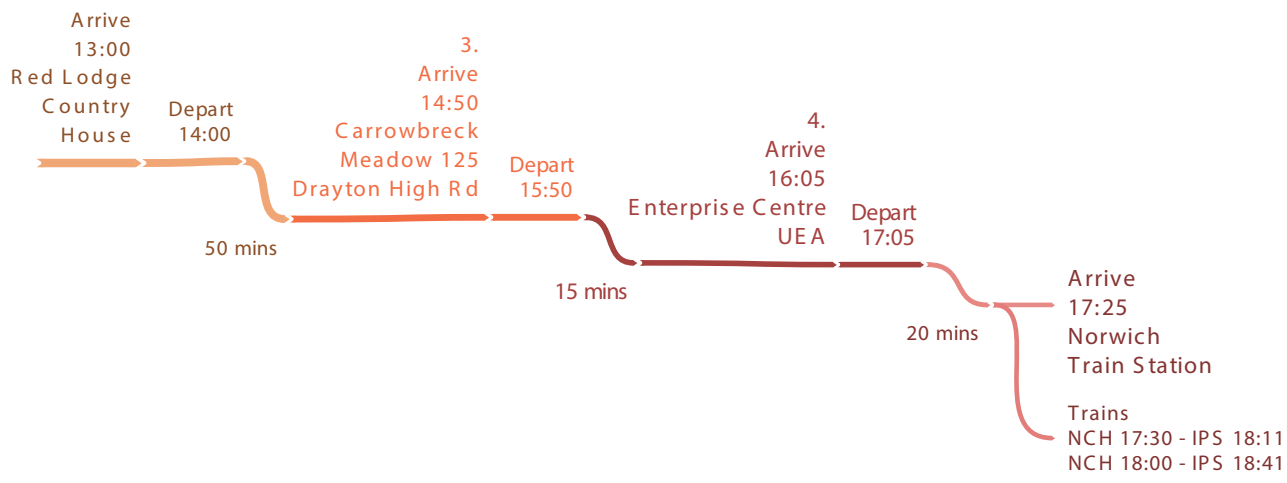
Site visits include;

Goldsmith Street: a council-led, high-density, affordable Passivhaus standard development of fifty homes and fifty apartments

Hillington Square: sensitive and low environmental impact approach to remodel an existing estate.

Carrowbreck Meadow: a low-density settlement of Passivhaus certified homes with an over-provision of affordable homes.

The Enterprise Centre; achieving Passivhaus standard and BREEAM outstanding rating, this building is the first internationally to achieve these standards alongside the use of renewable materials.



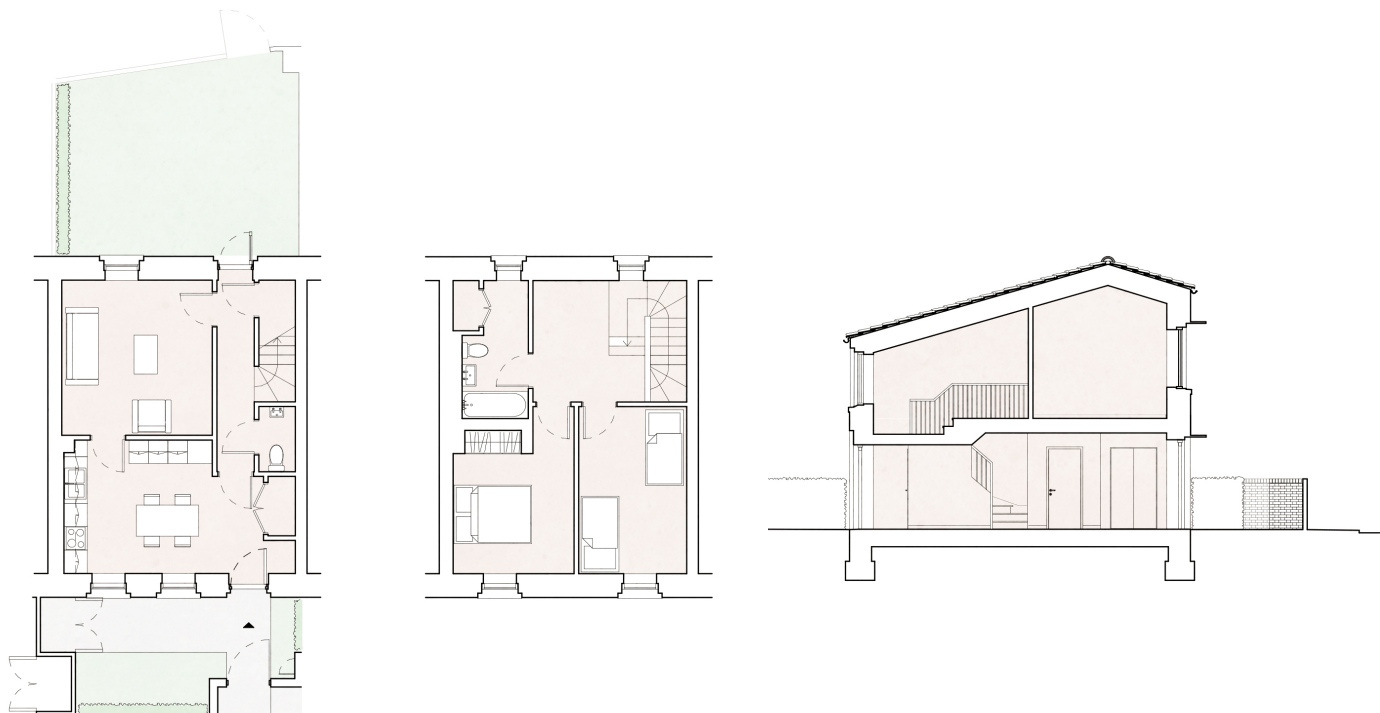
Attendee List

- Alex Ely, Mae Architects
- Anthony Hudson, Hudson Architects
- Boyd Nicholas, FHDC
- Carlos Hone, Ipswich Borough Council
- Colin Dunigan, West Suffolk Councils
- David Collinson, West Suffolk Councils
- David Richards, Suffolk County Council
- Henry Wootton, Mikhal Riches
- James Turner, Mikhal Riches
- James Todd, Architype
- Jennifer Bundock, Hudson Architects
- John Fisher, Suffolk Coastal District Council
- John Norman, Ipswich Society
- Julie Barrow, West Suffolk Councils
- Karen Chapman, Suffolk Growth Programme Board
- Kathie Guthrie, Mid Suffolk District Council
- Kay Bonning-Schmitt, Suffolk Growth Programme Board
- Kim Langley, West Suffolk Councils
- Mark Barnard, Suffolk County Council
- Martyn Fulcher, Ipswich Borough Council
- Michael Taylor, Ipswich Borough Council
- Phil Isbell, Mid Suffolk and Babergh DC
- Richard Rout, Suffolk County Council
- Rob Marsh-Feiley, Hollins
- Sarah Scott, Babergh Mid Suffolk District Council
- Sian Bunbury, Mid Suffolk District Council

Goldsmith Street

Our host will be;

James Turner, Mikhail Riches



All images are credited to Mikhail Riches



Mikhail Riches

Hillington Square

Our host will be;

Alex Ely, Mae
or Michael Dillion, Mae





mæ

HEMINGWAY DESIGN

Freebridge
COMMUNITY HOUSING

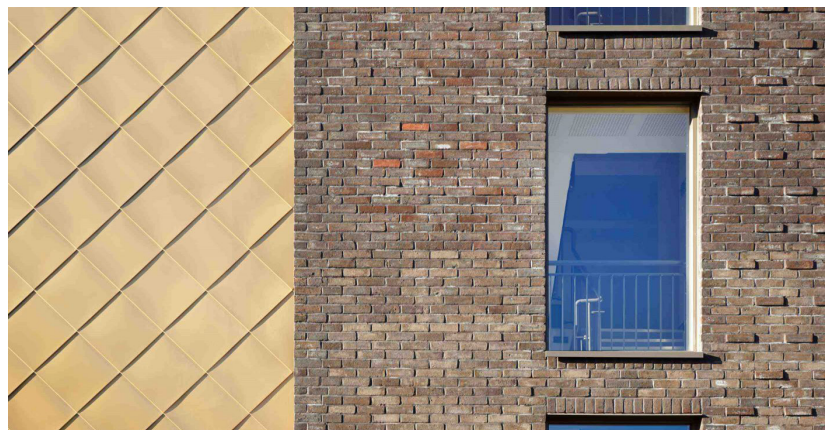


Photo credit Mae

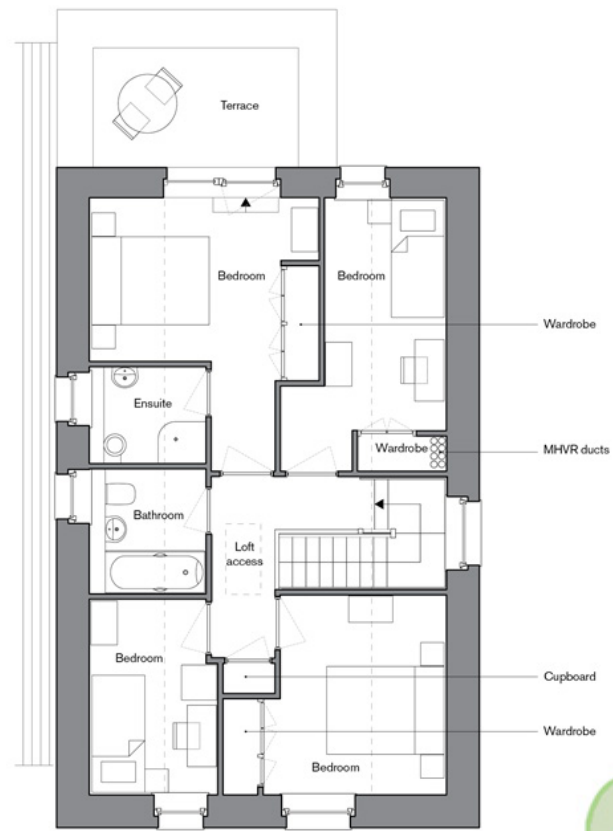
Carrowbreck Meadow

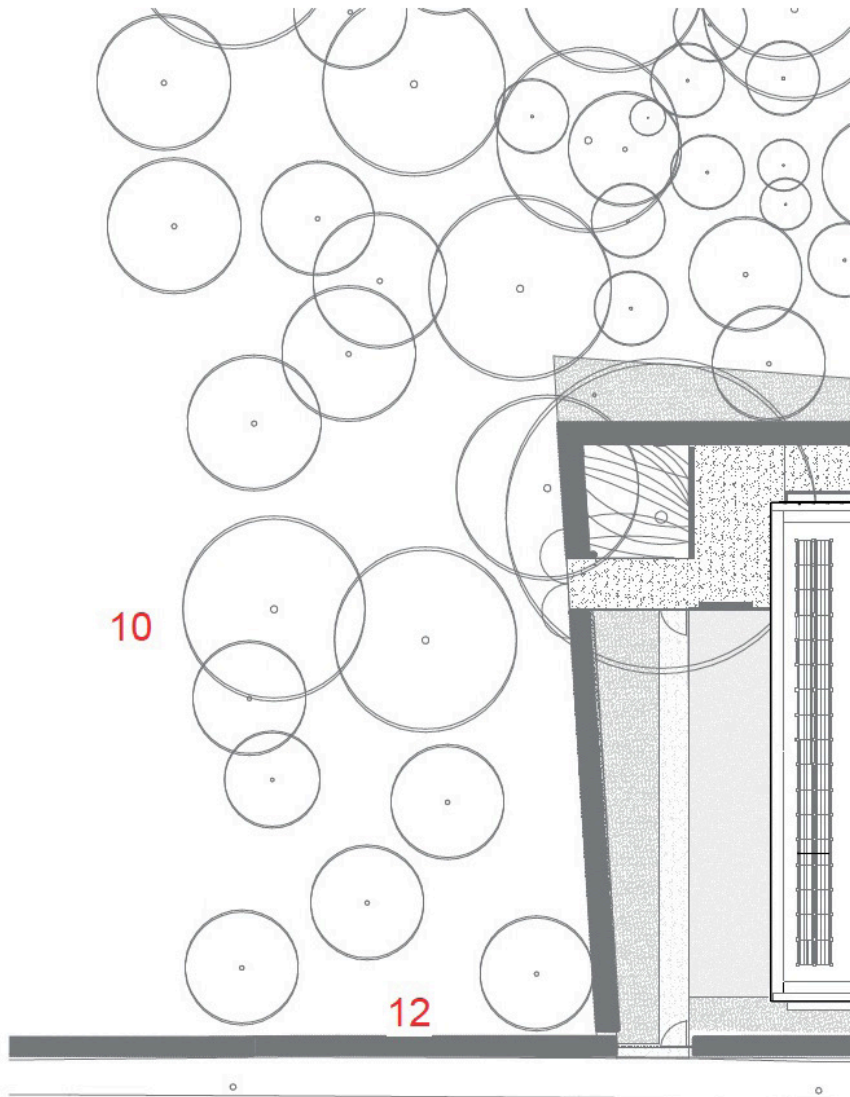
Our host will be;

Dan Towers, Hamson Barron Smith



Image credits Hamson Barron Smith



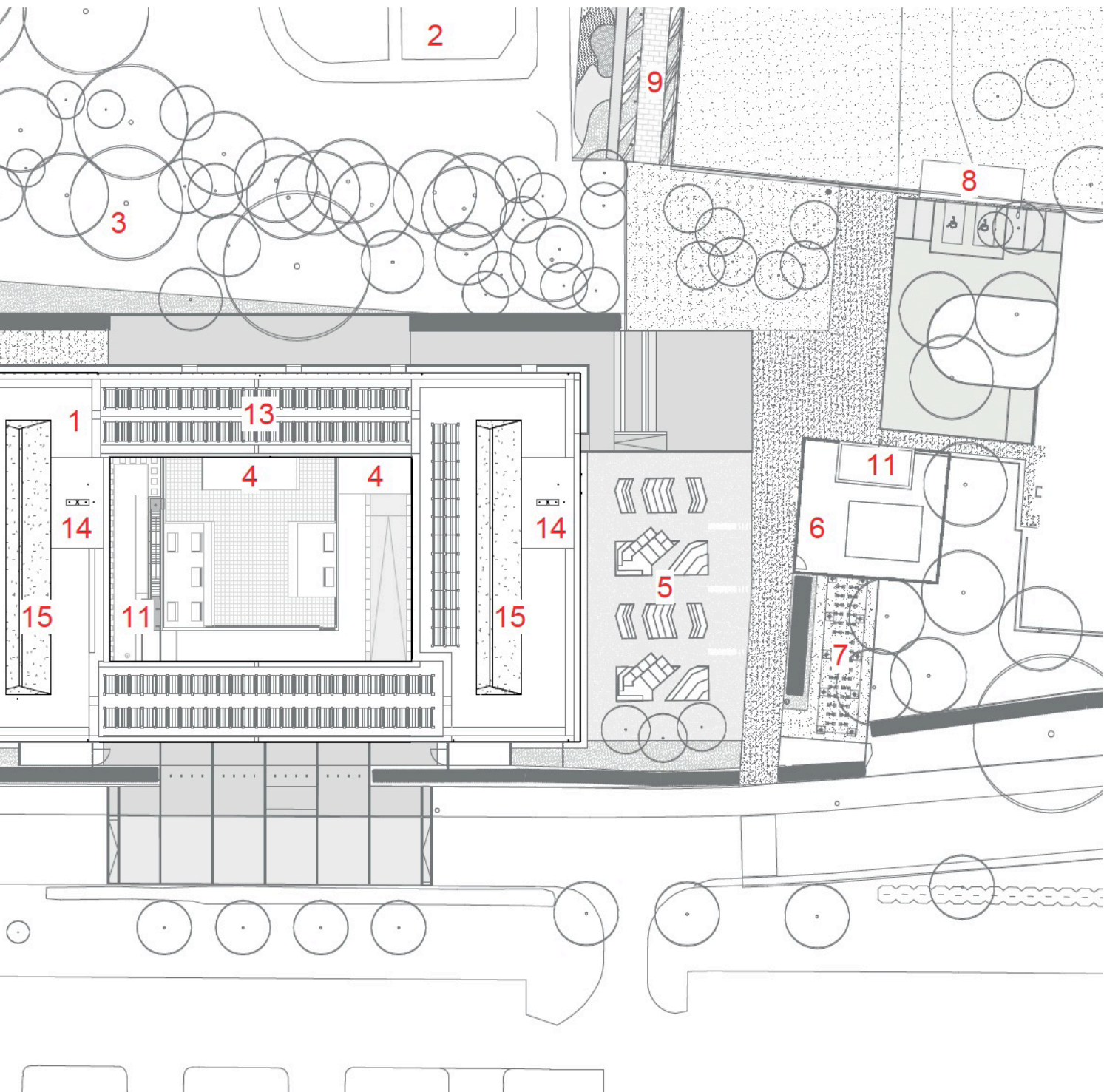


- 1 The Enterprise Centre
- 2 Earlham Hall Memorial Garden
- 3 Pine trees
- 4 Local flint beds from Holt, Norfolk
- 5 'Plants and Society' Garden
- 6 Demonstration area
- 7 Bicycle parking
- 8 Energy centre
- 9 Herbaceous border
- 10 Earlham park
- 11 Recycling store
- 12 Existing Hedge
- 13 Photovoltaic Panels
- 14 Rain water harvesting
- 15 Reed thatching

The Enterprise Centre

Our host will be;

James Todd, Architype



All images credited to Architype



—
www.suffolkdesign.uk
—